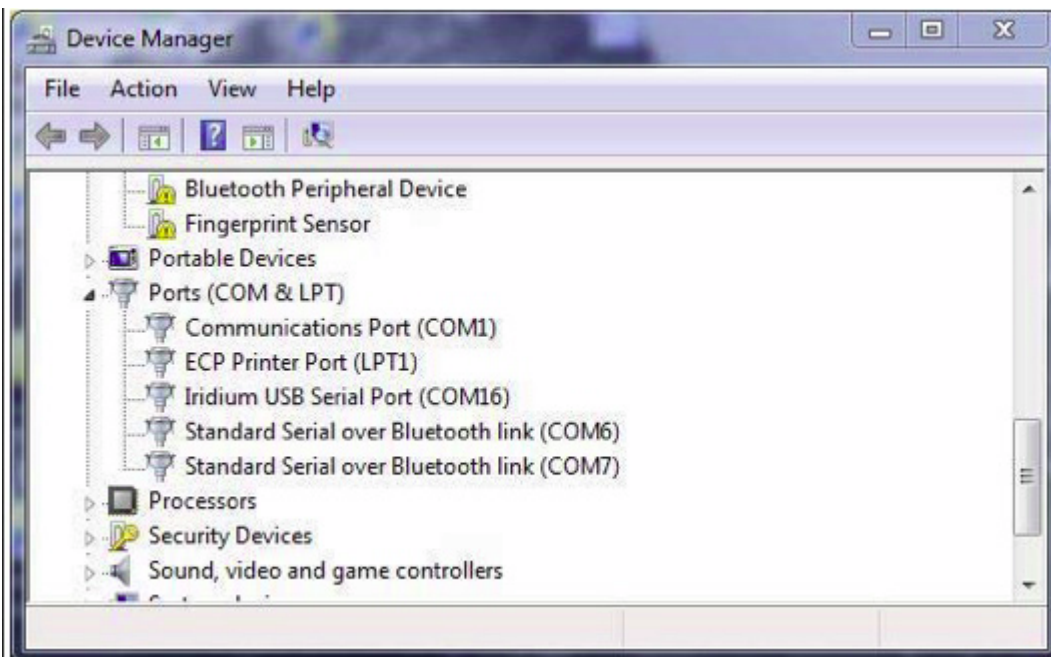


Installing Windows with Iridium 95x5 USB drivers and identifying the COM port being used by the Iridium 95x5 satellite phone

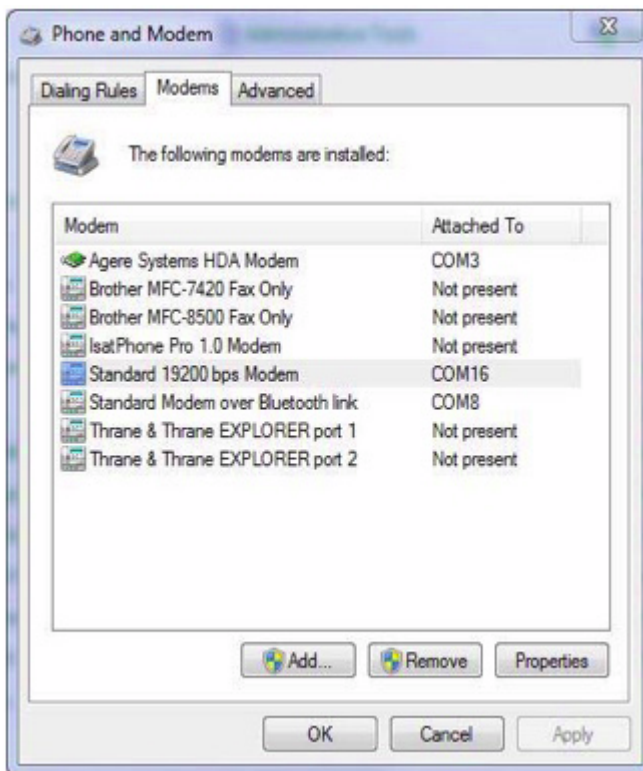
1. Download the USB drivers by [clicking here](#) (30KB), these are for the 9555/9575. Unzip the drivers and put them somewhere you can find them like C:\Iridium on your Windows computer.
2. For the 9500/9505/9505A you do not need a driver for the phone since communication will be through RS232. Since most computers do not have an RS232 port nowadays you will need an RS232-USB converter. For this converter you will probably need a driver (some types install themselves automatically). The supplier of this adapter will provide the driver (or have it available on their website). A generic driver ready for Windows 8 (also x64) has been made available on Safesat.nl but advice is to only try it if your own driver does not install. [click here](#)
3. Power on your Iridium 95x5.
4. Connect a Micro-USB data cable between the Iridium 95x5 and your Windows computer.
5. If the USB drivers do not automatically install (which they should) From the Start Button, select "Devices & Printers". Right Click on "Iridium USB Serial Port" and select "Properties". On Hardware Tab Click on "Properties". On Driver Tab click on Update Driver button. Click on "Browse my Computer for Driver Software". Browse to C:\Iridium\VCOMPORT folder and click on "Next". After the driver is installed, click on OK. Close all windows.
6. If you go to the Windows Device Manager (found under Control Panel : System) you can see the "Iridium USB Serial Port (COMxx)" which identifies the COM port being used. Take note of the COM port for later use.
7. If the driver is NOT installed correctly then you will see a yellow "<!>" next to the device in the Windows Device Manager. Double click this item, then in the next dialog box choose the "Update Driver" option. You should choose the location to search and point it to where you unzipped the file using the steps above. The driver should install correctly now - DO NOT TRY TO PROCEED BEYOND THIS STEP IF IT DOES NOT.



Windows Device Manager

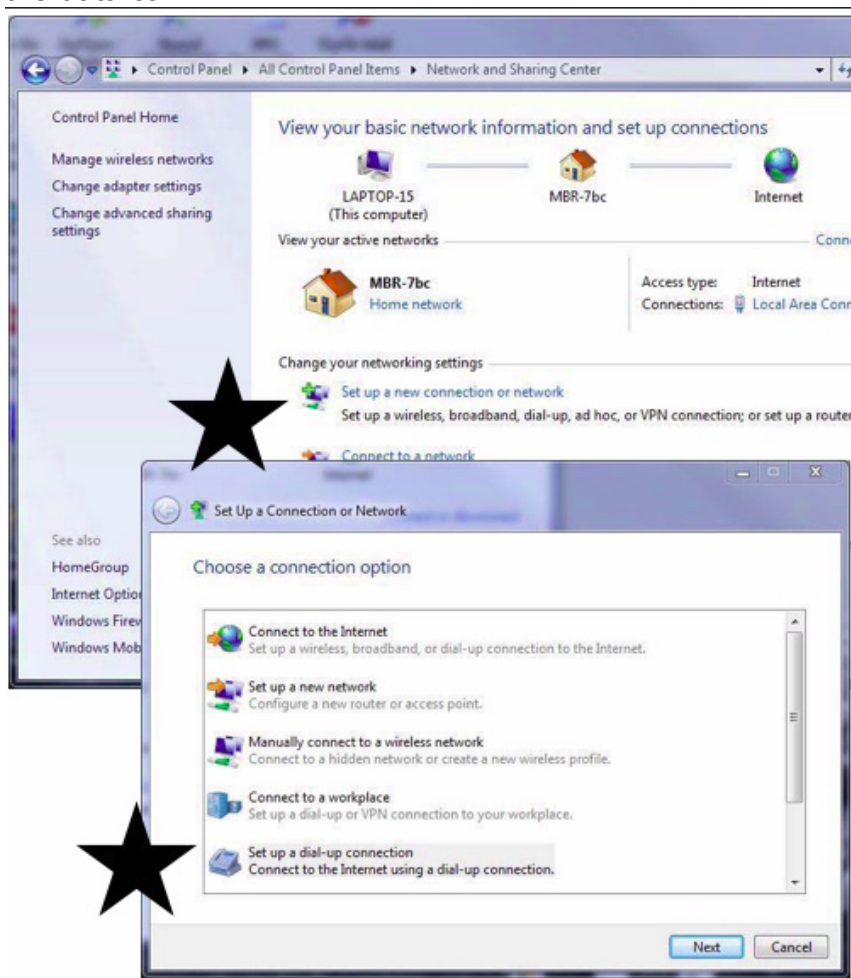
Installing a Standard 19,200 bps Modem driver in Windows

1. From the Start Button, select “Control Panel” and then “Phone and Modem”
2. Select the Modem tab and click the “Add...” button.
3. Check the “Don’t detect my modem...” box and click the “Next” button.
4. Be patient. You may need to wait 15-20 seconds before “(Standard Modem Types)” appears in the left-hand panel. In the right panel, select “ Standard 19200 bps Modem” and click “Next”.
5. Set to “Selected Ports” radio button and select the COM port associated with the Iridium 95x5 (see above).
6. Click “Next>”. Click “Finished”. Close all windows.
7. The Phone and Modem Modems tab should now have a line with “Standard 19200 bps Modem” with the appropriate COM port listed to the right (see below).



Steps for creating a DUNS connection in Windows with Iridium Standard 19,200 bps modem

1. From the Start Button, select Control Panel and then select "Phone and Modem"
2. Go to the Modems tab and click on "Standard 19200 bps Modem"
3. Click on the "Properties" button.
4. From the Start Button, select Control Panel and then "Network and Sharing Center"
 1. Click on the link: "Setup a new connection or network" (see graphic below)
 2. Click on the link: "Set up a dial-up connection"
5. In the Dial Up Phone Number field, type: **008816000025**
6. Leave User Name and Password fields blank
7. In the Connection Name field create an appropriate name for the connection like **Iridium DUNS**. This name will appear in the Network tray.
8. Make sure that the Iridium 95x5 has 4 to 5 bars of signal. Click **Connect**. You should now see USB DATA CALL IN PROGRESS on the Iridium 95x5's LCD screen.
9. In the future, you can return to the Network and Sharing Center and choose Manage Network Connections to initiate further dial up sessions.
10. When you are finished with Iridium internet session, remember to click **Disconnect** to end the data call.



Additional for Windows 8 Users (and also benefits Win7)

We have become aware that there is an advantage in adjusting the network adaptor bindings with Win8 in particular and also Win7. Please adjust your settings as follows:

- 1) Enter Control Panel
- 2) Choose Network and Sharing Centre
- 3) Choose Change Adaptor Settings (top left)
- 4) Right click on the Iridium connection and choose "Properties"
- 5) Change to the "Networking" tab
- 6) Deselect everything *except* "Internet Protocol Version 4 (TCP/IP)", ie this option should be the *only* item with a cross against it.
- 7) Choose OK

Testing the Iridium Connection

The best way to test the Iridium connection is to use Internet Explorer and to go to a small, fast webpage such as: <http://www.google.com>. Please remember that the internet will be extremely slow so it might appear that it is not working but any webpage will need time to load.

Also a good testing and way to browse will be to use <http://www.google.com/gwt/n> and check the box "Hide images". This site will scale down other sites considerably like if you would be viewing it with a mobile phone